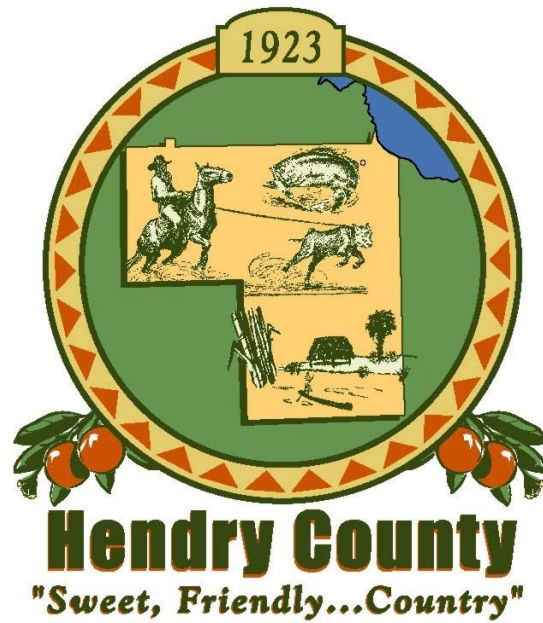


# 2006 TRAFFIC COUNT REPORT



Prepared by:  
Hendry County, Florida  
Engineering Department

February 2009

# 2006 TRAFFIC COUNT REPORT

## Introduction

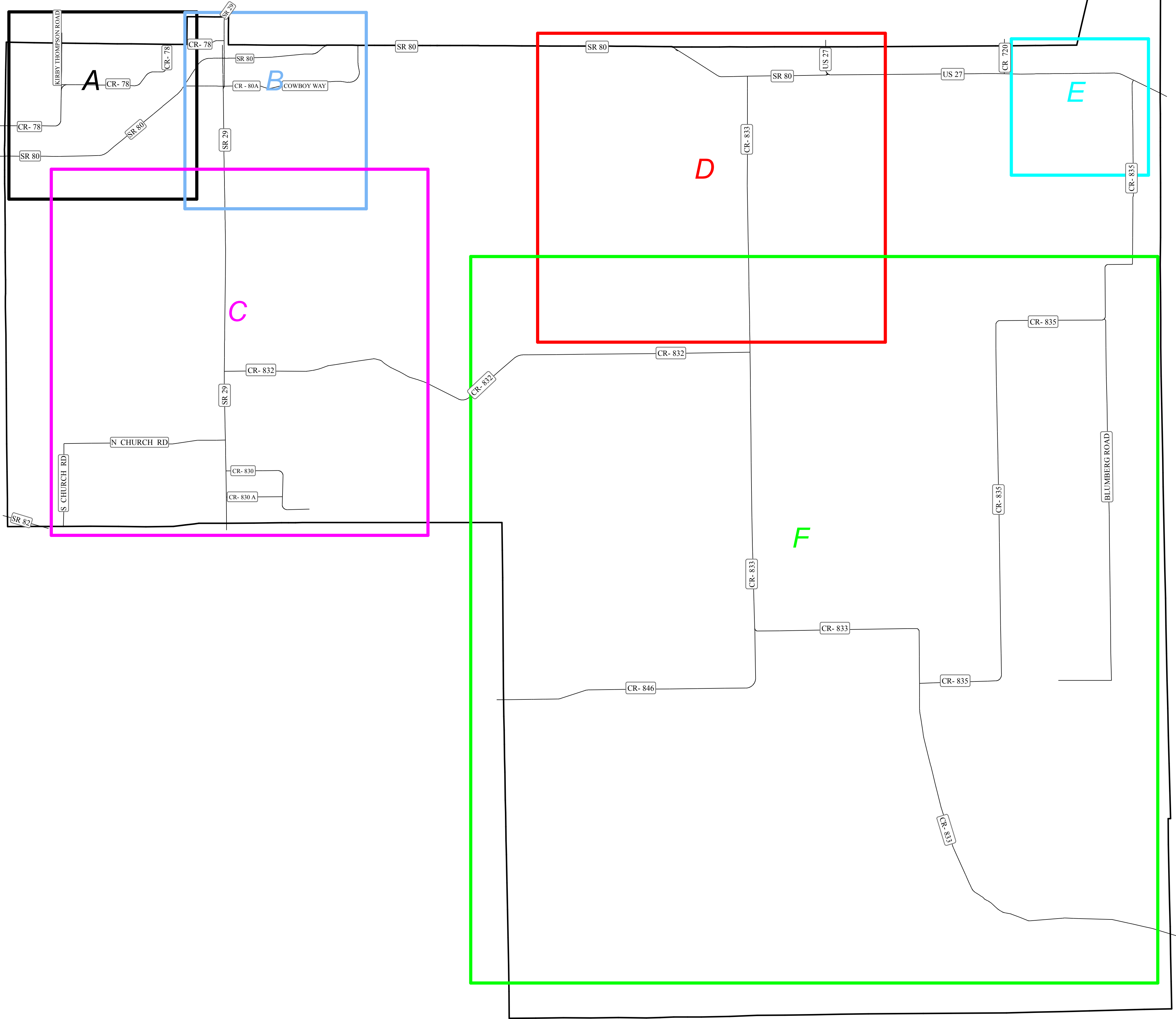
This report is intended to provide the traffic volumes for the roads throughout Hendry County from January 2006 to December 2006. Past traffic counts have also been provided for trends and estimating future traffic volumes. Hendry County Engineering Department monitored 29 locations in 2006

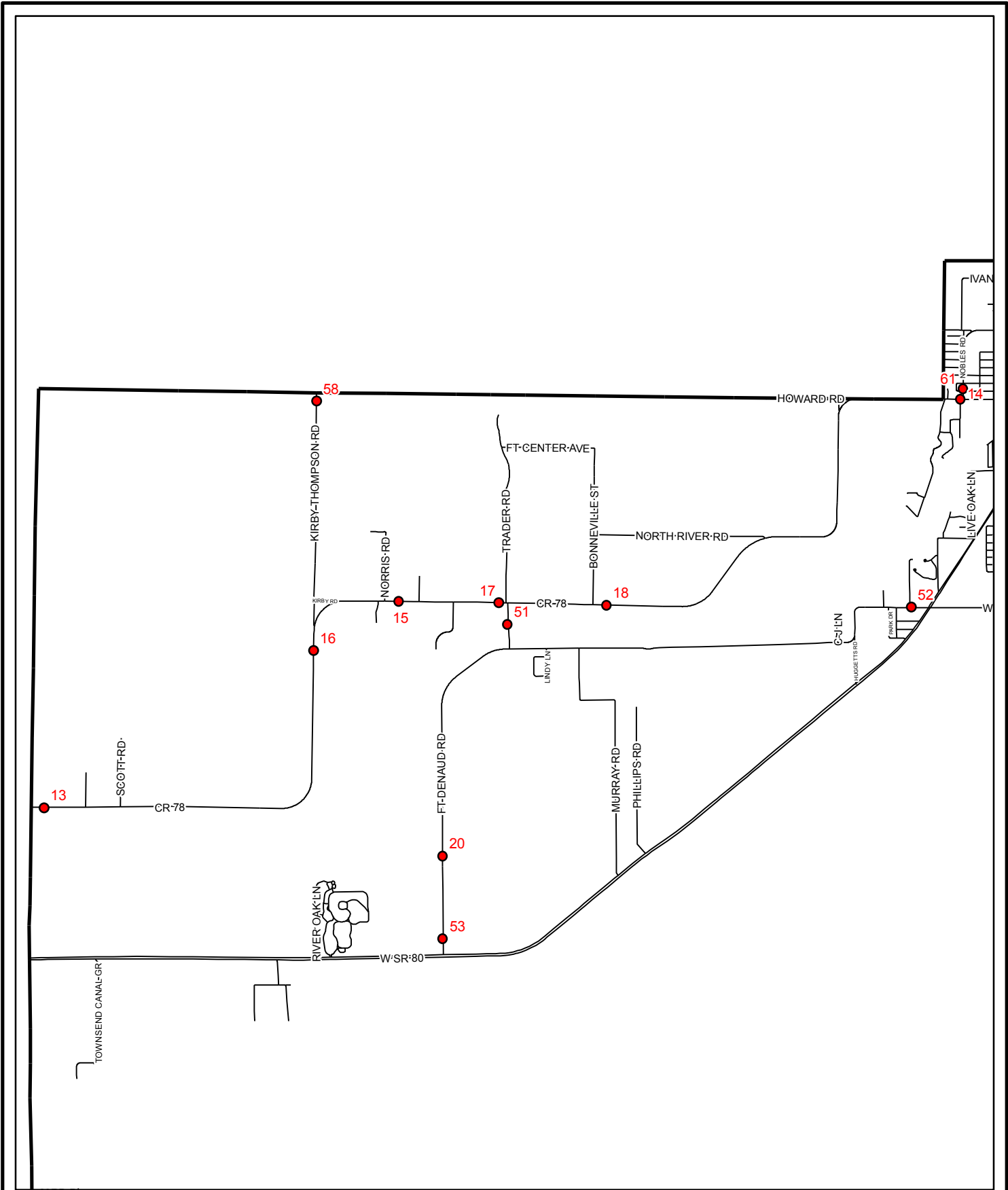
## Data Collection

Counts were recorded once a quarter for the various locations. Data was taken for two consecutive 24-hour periods and then averaged for each count. To this average a seasonal factor for Hendry County was applied. This factor was taken from the Florida Department of Transportation yearly traffic information. The reported AADT is the average of the four quarterly readings.

## Construction Activity

Roadway construction, especially major projects, can affect traffic flow and driving patterns for many miles from the project site and on many roads other than the one under construction. Although traffic counts are not collected in areas actively under construction, counts nearby may have been affected by the construction. No judgment is made on how much impact, if any, the construction may have had on a particular count. The user of these data should be aware the impact construction activity has on travel patterns. Users of this report should use their professional judgment to determine the applicability of these data to the study being performed.





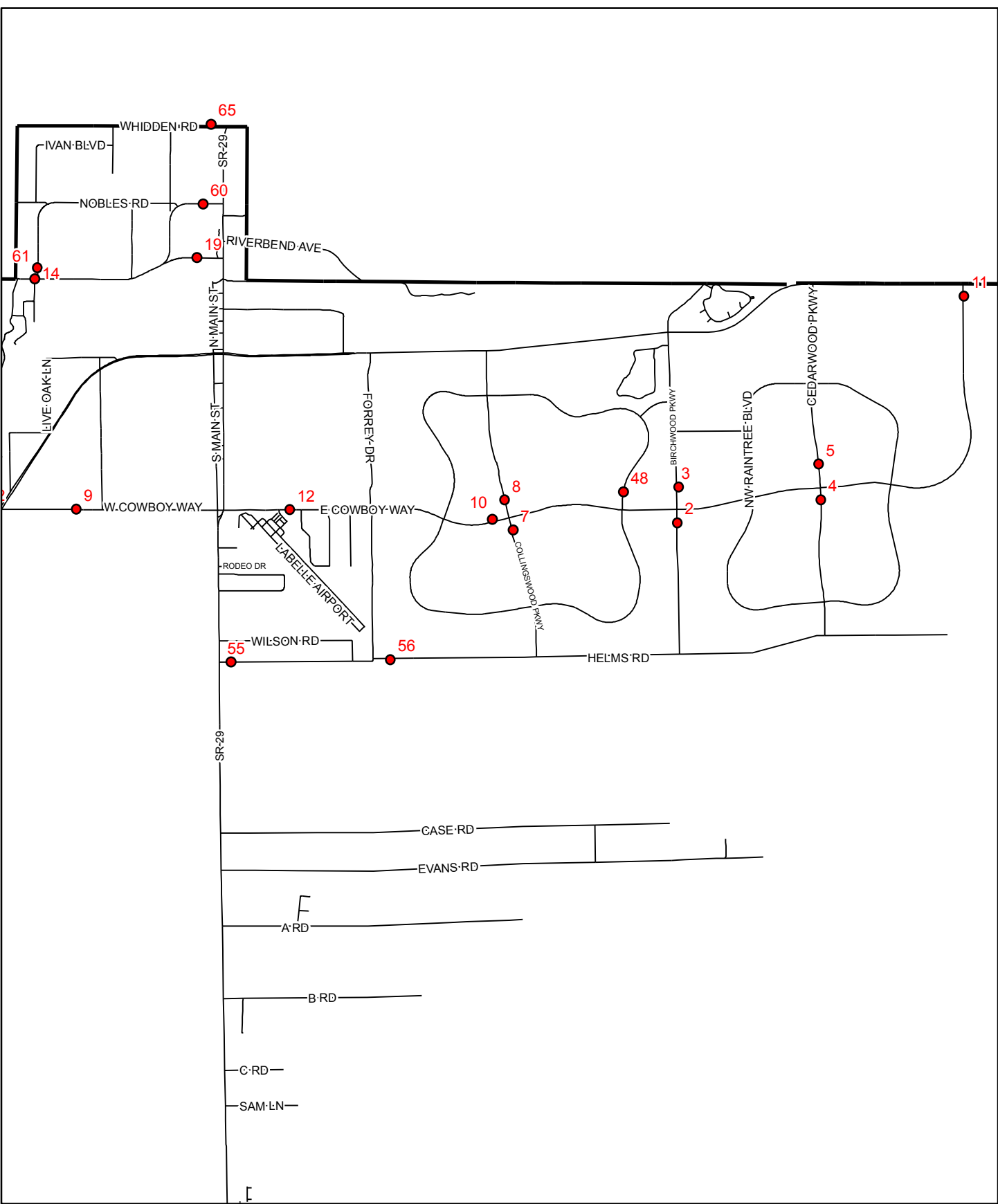
THIS MAP HAS BEEN COMPILED FROM THE MOST AUTHENTIC INFORMATION AVAILABLE AND THE HENDRY COUNTY GIS DEPARTMENT DOES NOT ASSUME RESPONSIBILITY FOR ERRORS OR OMISSIONS CONTAINED HEREON

FEB. 18, 2009

HENDRY COUNTY GIS DEPARTMENT  
 HAROLD W. BISCHER, DIRECTOR



TRAFFIC COUNT  
 LOCATION A  
 TC\_LOC\_A.PDF



THIS MAP HAS BEEN COMPILED FROM THE MOST AUTHENTIC INFORMATION AVAILABLE AND THE HENDRY COUNTY GIS DEPARTMENT DOES NOT ASSUME RESPONSIBILITY FOR ERRORS OR OMISSIONS CONTAINED HEREON

HENDRY COUNTY GIS DEPARTMENT  
 HAROLD W. BISCHEL, DIRECTOR  
 FEB. 18, 2009

TRAFFIC COUNT  
 LOCATION B  
 TC\_LOC\_B.PDF

B RD

C RD  
SAM LN

E RD

F RD

G RD

63

SEARS RD

27

CR-832

SR-29A

CHURCH RD

66

6

21

CR-830

24

CR-830A

22

25

23

NEELY-DAVIS RD

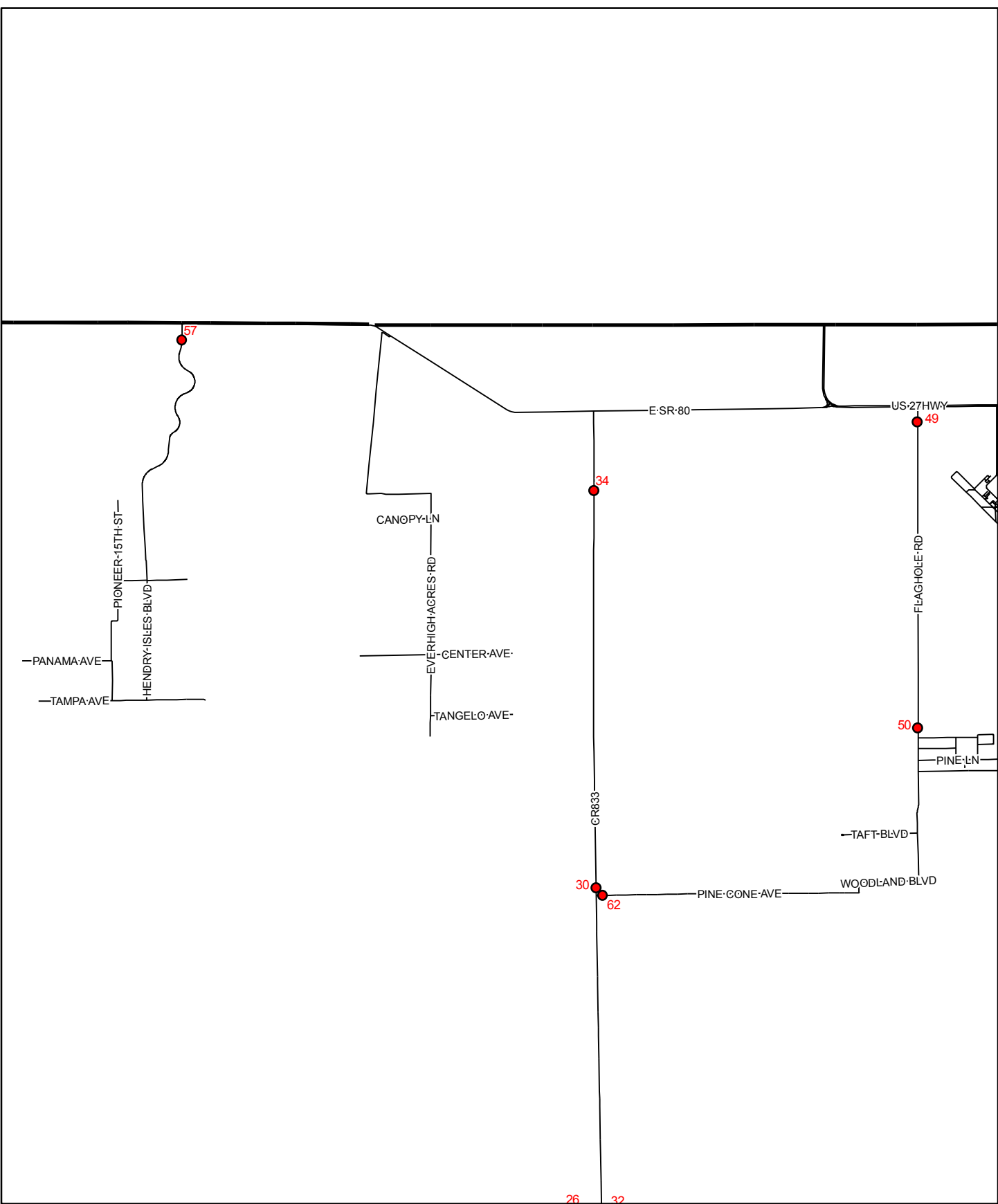
THIS MAP HAS BEEN COMPILED FROM THE MOST AUTHENTIC INFORMATION AVAILABLE AND THE HENDRY COUNTY GIS DEPARTMENT DOES NOT ASSUME RESPONSIBILITY FOR ERRORS OR OMISSIONS CONTAINED HEREON

FEB. 18, 2009

HENDRY COUNTY GIS DEPARTMENT  
HAROLD W. BISCHEL, DIRECTOR



TRAFFIC COUNT  
LOCATION C  
TC\_LOC\_C.PDF



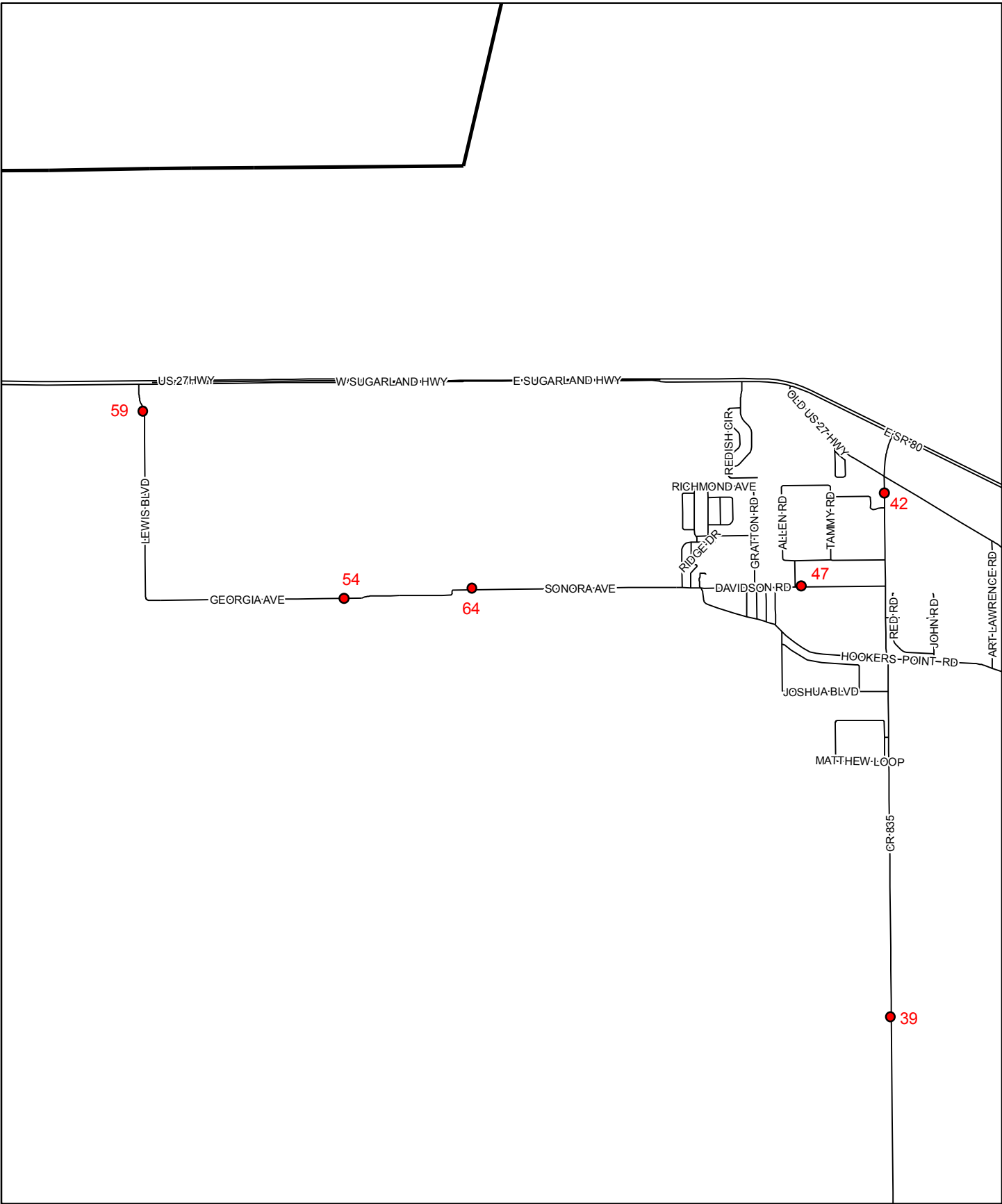
THIS MAP HAS BEEN COMPILED FROM THE MOST AUTHENTIC INFORMATION AVAILABLE AND THE HENDRY COUNTY GIS DEPARTMENT DOES NOT ASSUME RESPONSIBILITY FOR ERRORS OR OMISSIONS CONTAINED HEREON

FEB. 18, 2009

HENDRY COUNTY GIS DEPARTMENT  
 HAROLD W. BISCHEL, DIRECTOR



TRAFFIC COUNT  
 LOCATION D  
 TC\_LOC\_D.PDF



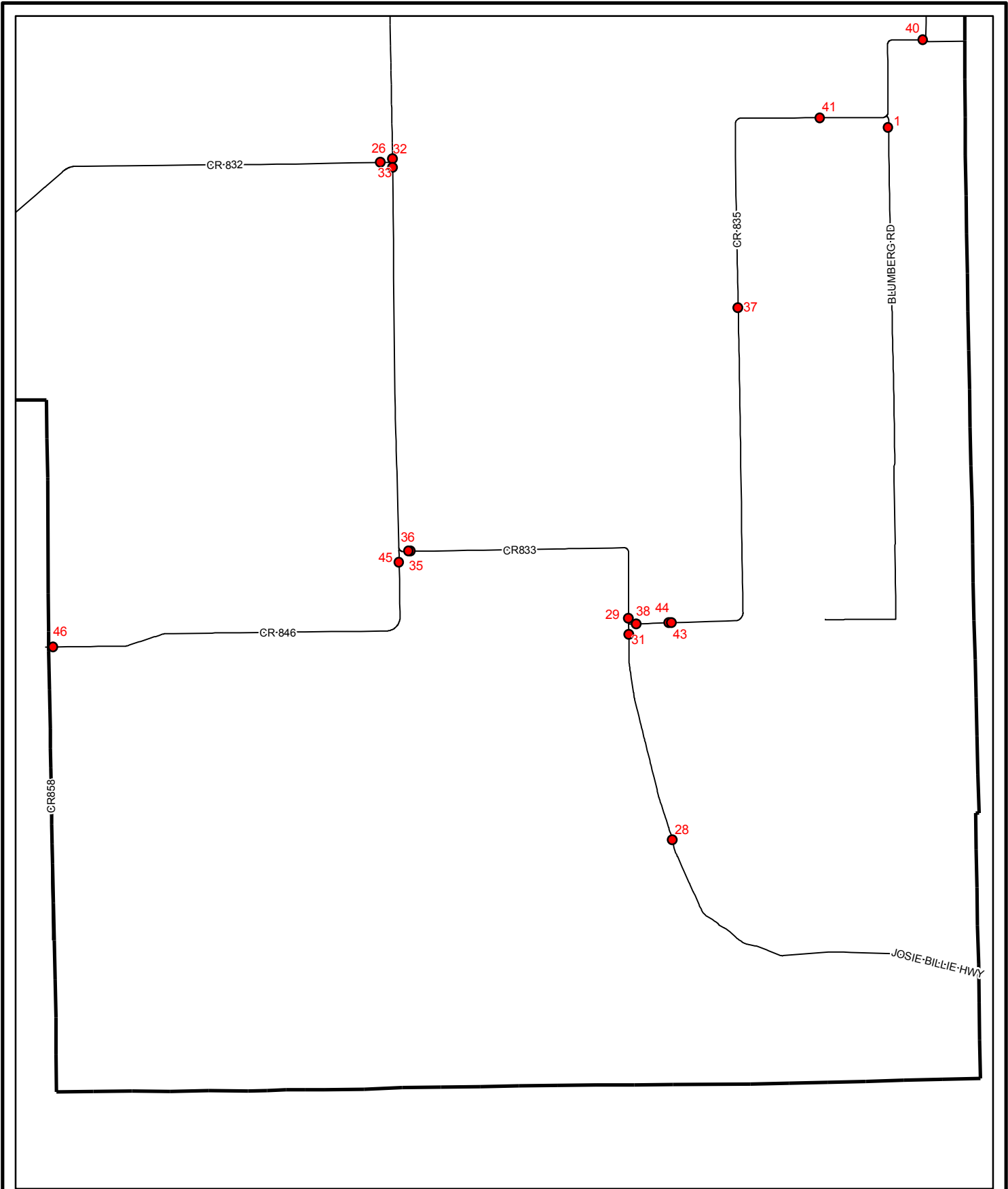
THIS MAP HAS BEEN COMPILED FROM THE MOST AUTHENTIC INFORMATION AVAILABLE AND THE HENDRY COUNTY GIS DEPARTMENT DOES NOT ASSUME RESPONSIBILITY FOR ERRORS OR OMISSIONS CONTAINED HEREON

FEB. 18, 2009

HENDRY COUNTY GIS DEPARTMENT  
 HAROLD W. BISCHER, DIRECTOR



TRAFFIC COUNT  
 LOCATION E  
 TC\_LOC\_E.PDF



THIS MAP HAS BEEN COMPILED FROM THE MOST AUTHENTIC INFORMATION AVAILABLE AND THE HENDRY COUNTY GIS DEPARTMENT DOES NOT ASSUME RESPONSIBILITY FOR ERRORS OR OMISSIONS CONTAINED HEREON

FEB. 18, 2009

HENDRY COUNTY GIS DEPARTMENT  
 HAROLD W. BISCHSEL, DIRECTOR



TRAFFIC COUNT  
 LOCATION F  
 TC\_LOC\_F.PDF

<i>Street</i>	<i>Location</i>	<i>Station #</i>	<i>2002</i>	<i>2003</i>	<i>2004</i>	<i>2005</i>	<i>2006</i>
Blumberg Rd	South of CR 835	1	500		760	600	
Birchwood Pkwy	South of Cowboy Way	2		93			1304
	North of Cowboy Way	3		729			
Cedarwood Pkwy	South of Cowboy Way	4		595			
	North of Cowboy Way	5		302			
Church Rd	North of SR 80	6			1002		
	West of SR 29	66					352
Collingswood Pkwy	South of Cowboy Way	7		1000			
	North of Cowboy Way	8	1800	889	1661	1508	1915
Cowboy Way	East of SR 80	9		4628	5208	6438	6549
	East of Collingswood Pkwy	10	4300	4143			
	South of SR 80	11		561			
	East of Hickory St	12			7966	7486	7892
CR 78	East Lee County Line	13	2400	2059	1817	1930	1798
	Nobles Rd	14	5600	4472	3933	4610	4779
	East of Norris Rd	15			1814	1536	2939
	West of Kirby Thompson Rd	16	2000				
	West of Ft. Denaud Bridgeway	17		1749			
	East of Bonneville St	18		1659	1799	1914	1695
	West of SR 29	19	6800	5817			
CR 830	East of SR 29	21		610			
	North of CR 830A	22		257			
	South of CR 830A	23		337			
CR 830A	East of SR 29	24		410			
	West of CR 830	25		411			
CR 832	West of CR 833	26	500	590	637	693	
	East of SR 29	27		683	814	539	490
CR 833	Indian Reservation	28	1000	870	1024	2211	2668
	North of CR 835	29	1000	959			
	North of Pine Cone Lane	30	1400		1860	1118	1119
	South of CR 835	31	1200	997			
	North of CR 832	32		1603			
	South of CR 832	33		1187	1293	998	1468
	South of SR 80	34		1896	2689	1169	2312
	1320 ft East of CR 846	35				1688	2108
	1000 ft East of CR 846	36				1155	1175
CR 835	Dooley Grade	37	1100				
	East of CR 833	38	900	1871			
	Railroad Tracks - Evercr	39	1200				
	Roger Rd	40	1400	1474			
	East of L-1 Canal	41			1103	817	884
	South of Old US 27	42	4100	2397	2433	2035	2004
	5760 ft East CR 833	43				1105	
	5280 ft East CR 833	44				558	
CR 846	South of CR 833	45		781			
	East of Collier County Line	46		899	973	945	1050
Davidson Rd	Shane Ln	47	3900	2961			
Eucalyptus Blvd	North of Cowboy Way	48	1600	1411			
Flaghole Rd	North of Kilpatrick Rd	49	2800		2687	2687	1558
	South of US 27	50	2800	2681			

<i>Street</i>	<i>Location</i>	<i>Station #</i>	<i>2002</i>	<i>2003</i>	<i>2004</i>	<i>2005</i>	<i>2006</i>
Ft. Denaud Bridgeway	North of Ft. Denaud Rd.	51		1332			
Ft. Denaud Rd.	West of SR 80	52		1885	1378	1007	1141
	North of SR 80	53	700	758	1132	1690	1985
Georgia Ave	7th St	54	1300	2592			
Helms Rd.	East of SR 29	55		719			
	East of Ford Rd	56		551			
Hendry Isles Blvd	South of SR 80	57	1100	1048	1067	1029	899
Kirby Thompson Rd	South of County Line	58	800	787	904	866	1181
Lewis Blvd	South of SR 27	59	3200	1494	1788	1578	1732
Nobles Rd	East of Thigpen Rd	60	1100		1550	1419	2027
	North of CR 78	61			1788	1653	4625
Pine Cone Ln	East of CR 833	62	800	1144	1249	833	818
Sears Rd	East of SR29	63		366			
Sonora Ave	East of WC Owen Ave	64	4500	3953			
Whidden Rd	West of SR 29	65	400		1531	1589	1791